



Our Lady and St Anne's



Year 3

Parents information evening

Come in and find yourself a seat!

Our school



School mission statement

"We want the best teaching, the best opportunities and the best support and encouragement for every child. We are a friendly, happy, Catholic school, where everyone is valued for their individuality and special gifts."

Motto

Our Light Shines Always (OLSA)

Behaviour



In school, our behaviour motto is
'Ready, Respectful, Safe'.

Children have 5 steps to success to achieve this:

1. Listen with respect
2. Be kind and treat everyone the way you wish to be treated
3. Take care of everything in our school
4. Be honest
5. Keep yourself and others safe

Parking



- Gentle reminders about considerate parking:
- Do not drive down Summerhill Terrace beyond the bollards.
 - Choose a safe parking space to drop off your children on a morning and after school.
 - Avoid parking in the parking bays outside the flats.

Parent communication



We will be moving away from Parent Hub in the coming months. Please ensure you have downloaded the Arbor app as we will be communicating via Parent Hub and Arbor.



Arbor is also our online payment platform. We are a cashless school and all payments to school must be made via Arbor.

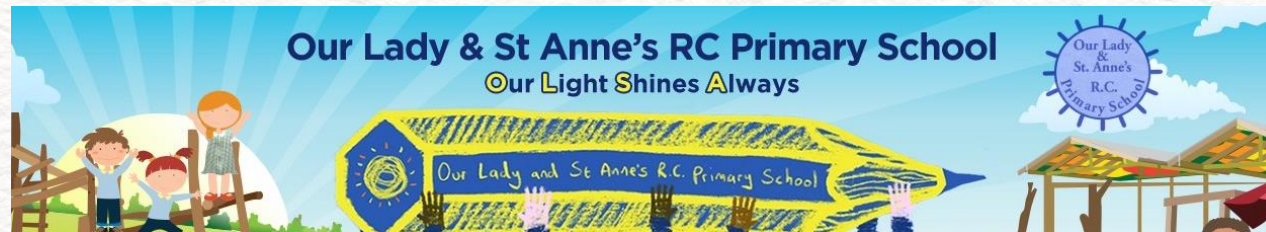
If you are struggling to access any of these channels, please speak to the office staff.



Our school website



Please remember to check our website www.olsa.org.uk regularly for all things OLSA related! There is a wealth of information about the school, including term dates and school policies, on the website which may be of use to you.



School uniform reminders



Please ensure children come to school in the correct uniform:

- Navy Blue jumper/cardigan with or without the school logo
- Black, dark grey or navy trousers or skirt; jeans and leggings are not uniform
- Yellow polo shirt with or without the school logo
- All black school shoes or trainers.
- Skirt length should be on or below the knee
- Blue/white or yellow/white checked dresses
- Shorts
- Socks (should be dark or white)/ tights(navy blue, grey or black plain opaque tights).

Uniform policy can be found on the school website.

School uniform reminders



General reminders about uniform

- 1 pair of stud earrings may be worn for school (any hanging ear rings will be asked to be removed and given back to the child at the end of the day)
- A watch is fine, but no smartwatches
- Long hair should be tied up (especially on PE days)
- No make up/nail varnish
- Please name EVERYTHING!

Uniform policy can be found on the school website.

PE uniform reminders



Please ensure children come to school in the correct PE uniform:

- White t-shirt, with or without the school logo;
- Dark (blue/black) shorts, tracksuit trousers or plain sports legging (no logos);
- Hoodies may ONLY be worn on PE days;
- Black plimsolls for indoors;
- Trainers for outdoors;
- No football strips are to be worn for PE;
- Earrings must be removed for PE days.

Uniform policy can be found on the school website.

Our curriculum



Information about our curriculum and the topics covered in class will be put on the website about the curriculum in each subject.

On the website, you will find our long term plans and medium term plans (which go into more detail about what is being covered in each subject every half term).

Our curriculum: Writing

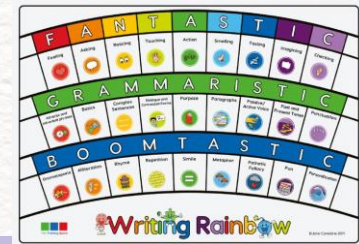


In school, we are using the Jane Considine scheme of writing to create incredible authors!



- In Year 3, we write a range of text types:
- **Fiction** (story writing including lost and found, adventure, twisted fairytales, historical, poetry)
 - **Non-fiction** (letters, instructions, non-chronological report, explanation)

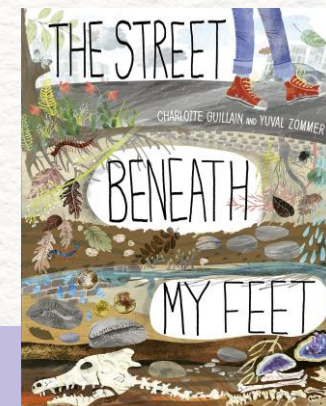
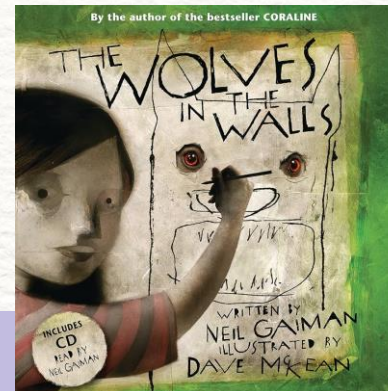
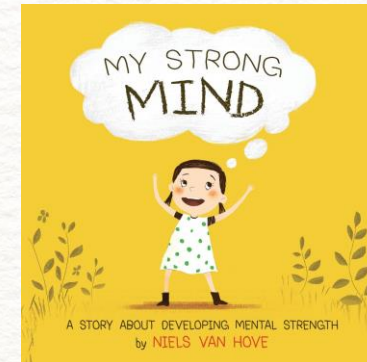
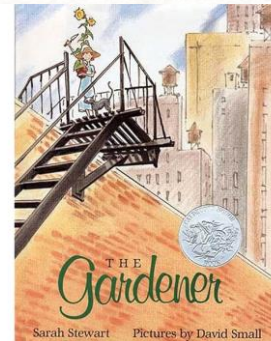
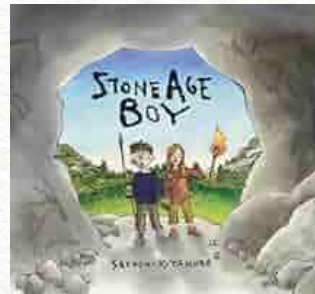
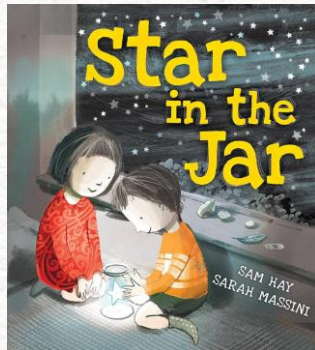
We explore the features of model texts and use these to help us be the best authors we can be!



Our writing models



Here are some the books we will use to be the models for our writing:



Our curriculum: Reading



We have Whole Class Reading sessions multiple times a week where we read a novel and complete a range of activities based on the story.



How you can support us:

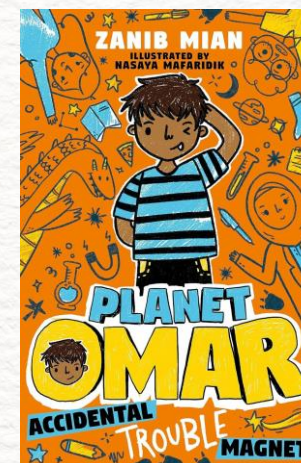
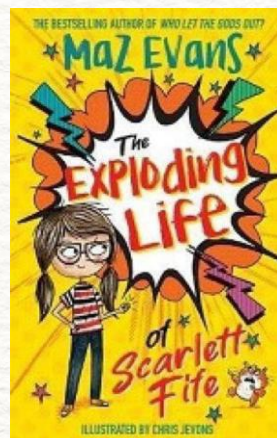
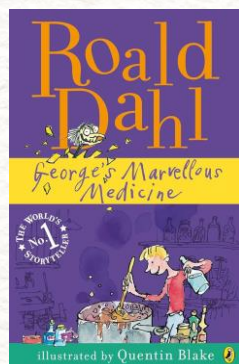
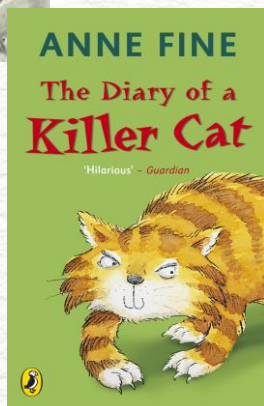
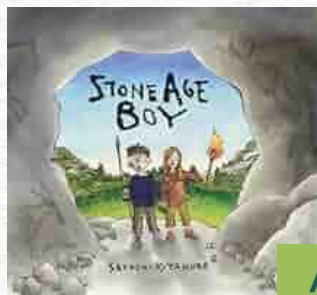
Children will come home this week with their reading books. Please support us by listening to your child read/commenting in their journals regularly. If children could have their books in school daily, this will mean we can listen to them in school. We aim to listen to all children regularly.

Reading Eggs homework will be set, so please encourage your child to log in and use this platform.

Our reading texts



Here are some the books we will use in our Whole Class Reading sessions:



Our curriculum: Maths



We want your child to become confident and assured mathematicians who see Maths in the whole world. Our Maths lessons in school enable children to think and use their Maths every day.

How you can support us:

Talk about your child's Maths learning at home. Ask them what they've been learning and HOW they've been doing it.

Maths homework is set on a Friday with the expectation that children complete it by a Thursday night. This homework is set on MyMaths.

Children are also expected to regularly access Times Table Rockstars at home.



Our curriculum: the wider curriculum



RE

We gather for Celebration of the Word in school 3 times weekly and worship in class daily.

Our RE topics cover a wide range of topics (including studying other faiths from around the world).



Science

Our Science topics this year:

- Animals including humans
- Rocks
- Light
- Forces and magnets
- Plants

In Science lessons, we talk like, think like and act like scientists.



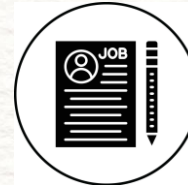
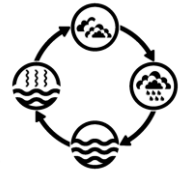
Our curriculum: the wider curriculum



History



Geography



Computing



Our curriculum: the wider curriculum



PE



Art/DT



MFL



Important days



Daily: reading books

Tuesday and Wednesday: PE kits (this half term)

Wednesday: Homework due (this will start in a few weeks)

Friday: Homework set

Attendance



Attendance in school is vital for your child's education.

We pride ourselves on our attendance. We have a number of attendance incentives in place for the coming year with chances for children to win prizes for 100% attendance. Please support us by sending your child to school every day, trying to arrange appointments outside of school time and not taking holidays during term time.

Our school day



A reminder that school gates open at 8:40am every morning (both the Villa Vic gates and the main gates). Gates close at 8:50am.

In Year 3, children are to be picked up promptly at 3:20pm from the Villa Vic gate.

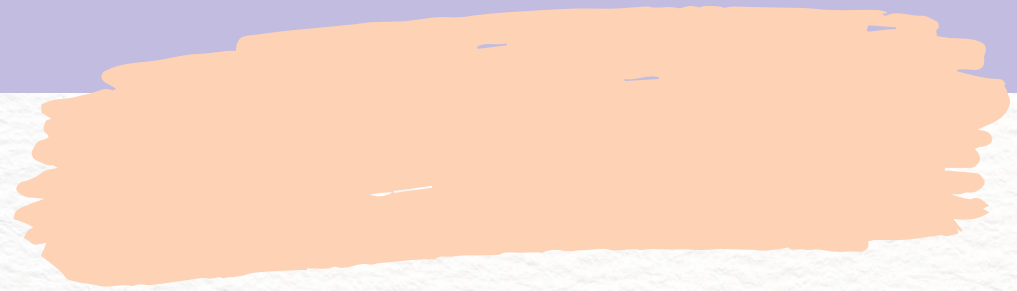
Residential



We will be going on a residential this year.
We will be having a camping trip at
Beamish.

Details are being finalised right now. As
soon as we know pricing, we will set up
payment plans.





Any questions?

